



BARRY UNIVERSITY

BARRY UNIVERSITY RING TRADITION

Since Barry University first opened its doors in 1940, Herff Jones Inc. has been creating rings for the many students and Alumni. Commissioned to design the first ring, Herff Jones worked with a committee of faculty and students.

The committee wanted a ring that was unique to Barry University that would be recognizable throughout the country.

The first ring was a rectangular style that ran vertical on the finger and featured a black onyx stone. The ring could also be ordered with an incised or encrusted BC. The sides of the ring featured the new Barry shield. After almost 70 years, the first ring style designed is still available today.

When the University went co-ed, a collegiate style as well as a signet style ring were made available in both men's and women's sizes. The name on the ring was changed from Barry College to Barry University by action of the Board of Trustees in 1981. The shield has not changed since its inception in 1940.

The Barry shield is a combination of the coat of arms of Bishop Patrick Barry and the Dominican order. The three books symbolize the acquisition of knowledge. The Bishop's escutcheon was moved to the dexter or right side of the shield, because in heraldry, this is the position of honor. The Dominican shield forms the sinister or left side of the shield and indicates that the University is a Dominican foundation.

For information on ordering your Barry University ring, please visit:

www.herffjones.com/college/rings

For further information or assistance ordering your official Barry University ring, please contact:

Herff Jones, Inc.

7640 NW 25th St. Unit#107

Miami, FL 33122

305.670.6012

hjcollegefl@aol.com

or visit us at online at:

www.herffjones.com/college/rings



Official Ring Collection



Official Ring Collection

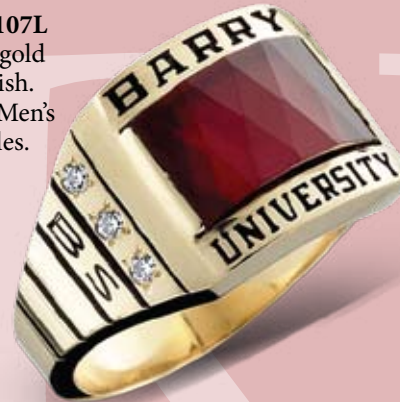
Men's Collegiate - P300XX

Shown in yellow gold with antique finish.



Newport II - C1107L

Shown in yellow gold with antique finish. Available in both Men's and Ladies' styles.



Ladies' Cortina - C955P

Shown in yellow gold with natural finish.



Ladies' Miniature - P200P

Shown in yellow gold with antique finish.



Original Barry Ring

Designed in 1940. Shown in yellow gold with natural finish and encrusted BU. Available with black onyx stone with or without encrusted BU. Ladies ring only.



Men's Cortina- C955X

Shown in yellow gold with antique finish.