



# Camp Common Home

Faith. Ecology. Action.

@Barry University

Igniting the Next Generation of  
Eco-Conscious Leaders

# A Formational Experience for High School Students at Barry University

Camp Common Home for Ecological Action is a dynamic 5-day summer experience that provides opportunities for high school students to explore real environmental challenges, grow as leaders, deepen their eco-spirituality, build lasting friendships, and take meaningful action to care for our planet: our common home.

Through hands-on exploration, outdoor adventure, community engagement, creative expression, and guided reflection, campers engage the most urgent environmental and social issues of our time. Along the way, they'll discover how science, justice, spirituality, and leadership come together to be part of the solution.



# Camp Common Home: Purpose & Impact

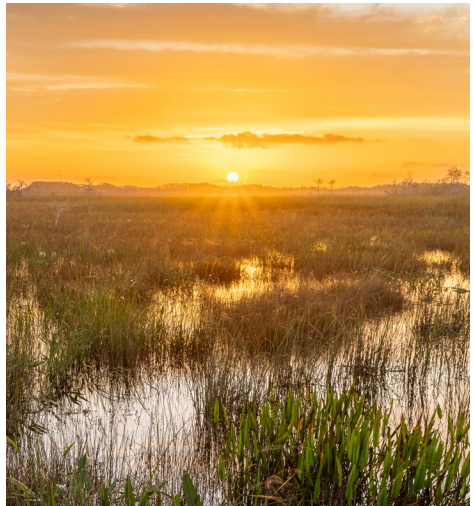
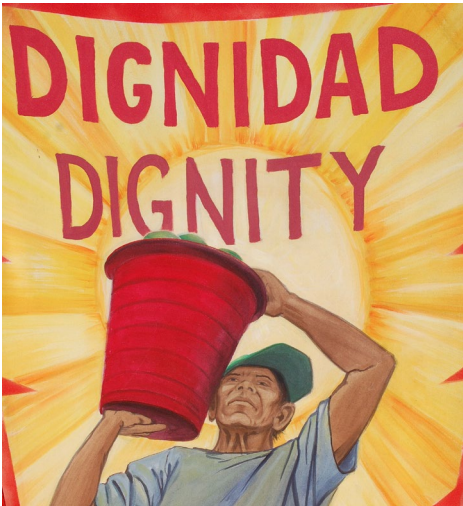
Camp Common Home is inspired by the global movement ignited by Pope Francis's 2015 encyclical, *Laudato Si'*, which calls all people of faith to care for creation and one another. Guided by an integral ecology approach, each camp activity is intentionally aligned with the seven *Laudato Si'* Action Platform Goals, integrating scientific learning with ethical reflection, spiritual growth, and civic responsibility.



Through hands-on experiences, participants will see, judge, and act, developing the knowledge and skills to care for creation and stand with the most vulnerable. Campers learn alongside scientists and community leaders while being mentored by Barry University faculty, student leaders, and high school teachers. Together, they explore real environmental challenges across South Florida and build lasting friendships rooted in a shared commitment to justice and sustainability.

# Campers Dive Into Real-World Experiences

- Test water quality on local waterways
- Join a shark tagging expedition with marine scientists
- Visit an Everglades restoration site
- Explore the story behind ethical chocolate & coffee
- Meet policymakers & environmental advocates
- Learn about farmworker justice & food systems
- Learn composting & recycling through hands-on activities
- Create eco-art using recycled materials



# Here's How to Join Us:

## Cost & Scholarships

Campers pay a \$250 registration fee. All additional costs, including meals, field experiences, materials, and programming, are fully covered. Scholarships are available to ensure all students can participate.

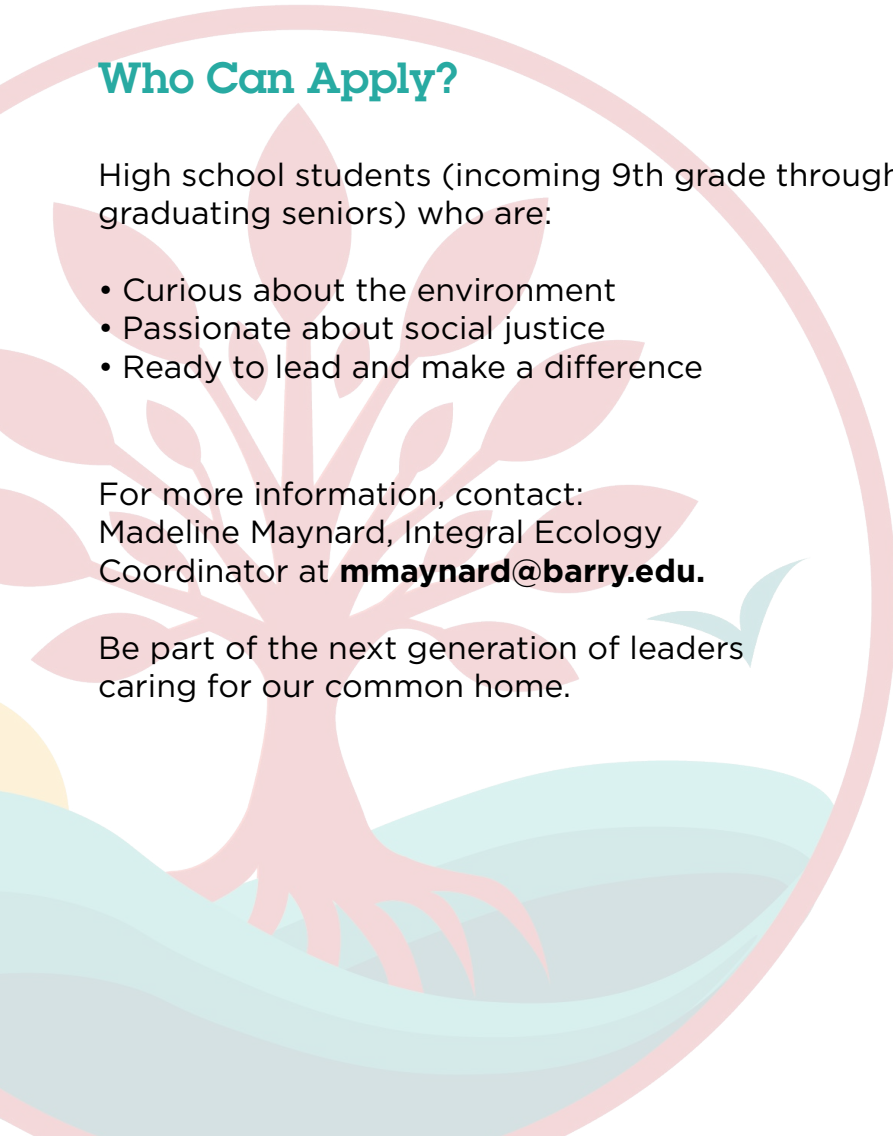
## Who Can Apply?

High school students (incoming 9th grade through graduating seniors) who are:

- Curious about the environment
- Passionate about social justice
- Ready to lead and make a difference

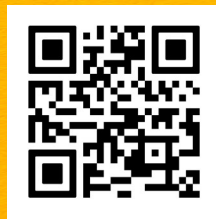
For more information, contact:  
Madeline Maynard, Integral Ecology  
Coordinator at [mmaynard@barry.edu](mailto:mmaynard@barry.edu).

Be part of the next generation of leaders  
caring for our common home.





**Camp Common Home**  
Faith. Ecology. Action.  
@Barry University



[www.barry.edu/campcommonhome](http://www.barry.edu/campcommonhome)

For more information, please contact:  
Integral Ecology Coordinator,  
Madeline Maynard at  
[mmaynard@barry.edu](mailto:mmaynard@barry.edu)